

Leadership

Music by Sir Arthur Sullivan, adapted;
words by Ian C. McKay

MoG*

Chorus

Piano

8

8

8

8

When I was a lad I was born an E B* and I

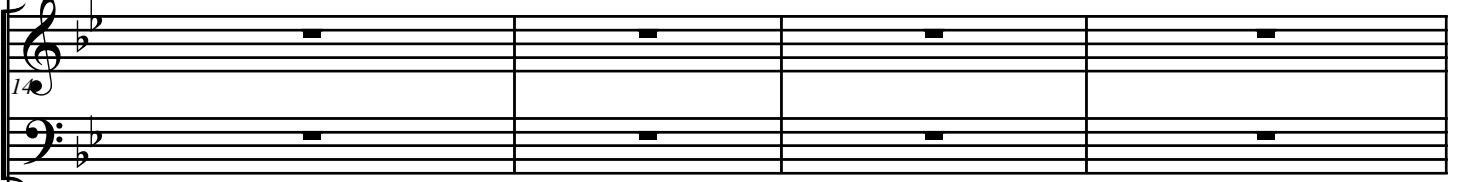
Leadership

14

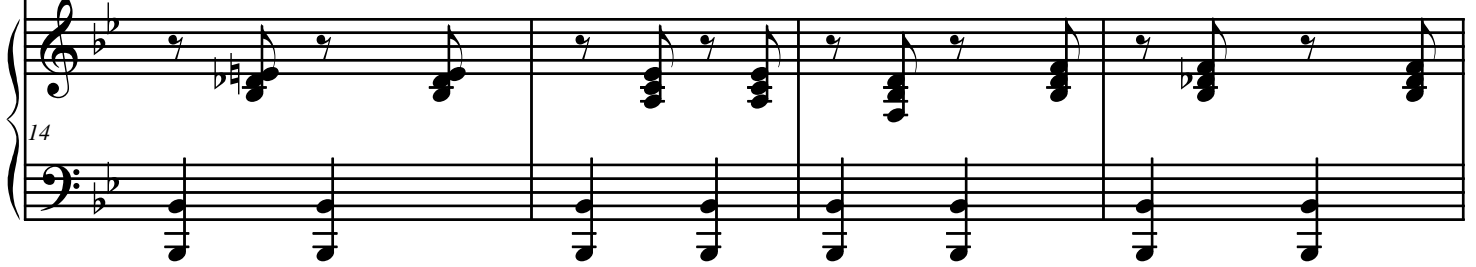


served the sand-wich-es and poured the tea; I said my pray-ers and went to the meet-ing and

14



14



18



tid-ied up the hymn-books and arr-anged the seat-ing,

18



He tid-ied up the hymn-books and arr-

18



Leadership

21

I tid-ied up the hymn-books so care-ful-lee that now I am the Lead-er of the

21

anged the seat-ing

21

25

whole E B

25

He tid-ied up the hymn-books so care-ful-lee that now he is the Lead-er of the

25

Leadership

29

Measures 29-33 of the bass line. Measure 29 is a whole rest. Measure 30 starts with a half rest followed by a quarter note G2, then eighth notes G2-A2-B2-C3, and a quarter rest. Measure 31 continues with eighth notes D3-E3-F3-G3, eighth notes A3-B3-C4, and a quarter rest. Measure 32 continues with eighth notes D4-E4-F4-G4, eighth notes A4-B4-C5, and a quarter rest. Measure 33 continues with eighth notes D5-E5-F5-G5, eighth notes A5-B5-C6, and a quarter rest.

Of God and all that I had a bit of doubt and I

29

Measures 29-33 of the treble line. Measure 29 is a whole rest. Measures 30-33 are also whole rests.

29

Measures 29-33 of the bass line. Measure 29 is a whole rest. Measures 30-33 are also whole rests.

whole E B.

29

Measures 29-33 of the treble line. Measure 29: G4 quarter, A4 quarter, B4 quarter, C5 quarter. Measure 30: D5 quarter, E5 quarter, F5 quarter, G5 quarter. Measure 31: A5 quarter, B5 quarter, C6 quarter, D6 quarter. Measure 32: E6 quarter, F6 quarter, G6 quarter, A6 quarter. Measure 33: B6 quarter, C7 quarter, D7 quarter, E7 quarter.

29

Measures 29-33 of the bass line. Measure 29: G2 quarter, A2 quarter, B2 quarter, C3 quarter. Measure 30: D3 quarter, E3 quarter, F3 quarter, G3 quarter. Measure 31: A3 quarter, B3 quarter, C4 quarter, D4 quarter. Measure 32: E4 quarter, F4 quarter, G4 quarter, A4 quarter. Measure 33: B4 quarter, C5 quarter, D5 quarter, E5 quarter.

34

Measures 34-38 of the bass line. Measure 34: G2 quarter, A2 quarter, B2 quarter, C3 quarter. Measure 35: D3 quarter, E3 quarter, F3 quarter, G3 quarter. Measure 36: A3 quarter, B3 quarter, C4 quarter, D4 quarter. Measure 37: E4 quarter, F4 quarter, G4 quarter, A4 quarter. Measure 38: B4 quarter, C5 quarter, D5 quarter, E5 quarter.

did-n't un-der stand what it was all ab-out but the Peebs did-n't mind and thought it just fine and al-

34

Measures 34-38 of the treble line. Measures 34-38 are whole rests.

34

Measures 34-38 of the bass line. Measures 34-38 are whole rests.

34

Measures 34-38 of the treble line. Measure 34: G4 quarter, A4 quarter, B4 quarter, C5 quarter. Measure 35: D5 quarter, E5 quarter, F5 quarter, G5 quarter. Measure 36: A5 quarter, B5 quarter, C6 quarter, D6 quarter. Measure 37: E6 quarter, F6 quarter, G6 quarter, A6 quarter. Measure 38: B6 quarter, C7 quarter, D7 quarter, E7 quarter.

34

Measures 34-38 of the bass line. Measure 34: G2 quarter, A2 quarter, B2 quarter, C3 quarter. Measure 35: D3 quarter, E3 quarter, F3 quarter, G3 quarter. Measure 36: A3 quarter, B3 quarter, C4 quarter, D4 quarter. Measure 37: E4 quarter, F4 quarter, G4 quarter, A4 quarter. Measure 38: B4 quarter, C5 quarter, D5 quarter, E5 quarter.

Leadership

38

lowed me to par-take of the bread and the wine; I par-

Detailed description: This system contains the first vocal line and the beginning of the piano accompaniment. The vocal line starts with a bass clef and a key signature of two flats. The piano accompaniment consists of two staves, with the right hand playing chords and the left hand playing a simple bass line.

38

all - owed him to par-take of the bread and the wine

Detailed description: This system continues the vocal line and piano accompaniment. The vocal line has a treble clef. The piano accompaniment continues with similar harmonic support.

38

Detailed description: This system continues the vocal line and piano accompaniment. The piano accompaniment features more complex chordal textures in the right hand.

42

took of the bread so rever-ent - lee that now I am the Lead - er of the whole E B.

Detailed description: This system contains the fourth vocal line and piano accompaniment. The vocal line has a bass clef. The piano accompaniment continues with harmonic support.

42

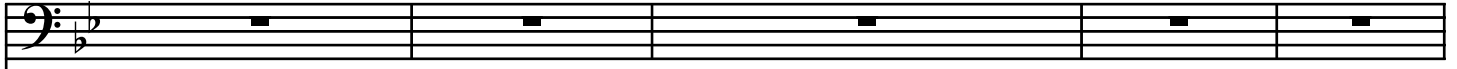
Detailed description: This system continues the vocal line and piano accompaniment. The piano accompaniment features a steady rhythmic pattern in the right hand.

42

He par -

Detailed description: This system contains the sixth vocal line and piano accompaniment. The vocal line has a treble clef. The piano accompaniment continues with harmonic support.

46

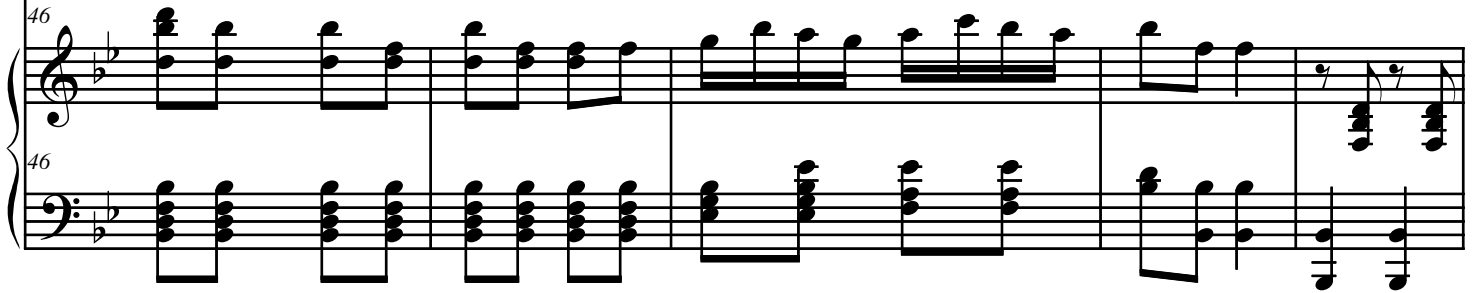


A single bass staff containing five measures of whole rests.



Two staves of musical notation for measures 46-50. The upper staff is in treble clef and the lower staff is in bass clef. Both are in a key signature of two flats. The upper staff contains a melodic line with eighth and sixteenth notes. The lower staff contains a bass line with eighth and sixteenth notes.

took of the bread so rever-ent-lee that now he is the Lead-er of the whole E B.



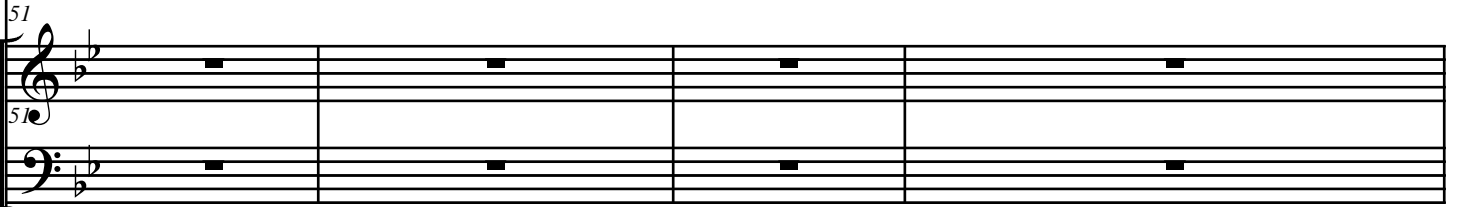
Piano accompaniment for measures 46-50, consisting of two staves. The upper staff is in treble clef and the lower staff is in bass clef. Both are in a key signature of two flats. The upper staff contains chords and moving lines. The lower staff contains chords and moving lines.

51

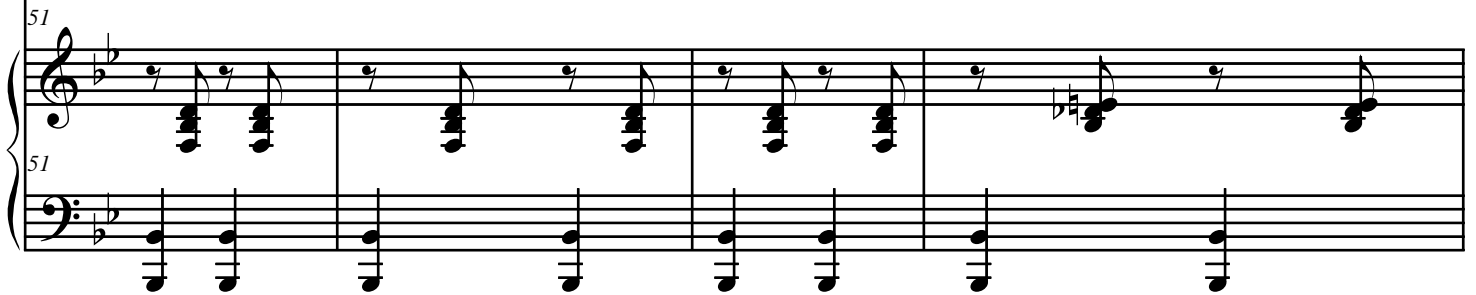


A single bass staff containing five measures of musical notation. The first measure is a whole rest, followed by four measures of eighth and sixteenth notes.

At the age of a-bout twelve I be-gan to pray and learned a-bout the things you were supp-



Two staves of musical notation for measures 51-55. The upper staff is in treble clef and the lower staff is in bass clef. Both are in a key signature of two flats. The upper staff contains whole rests. The lower staff contains whole rests.



Piano accompaniment for measures 51-55, consisting of two staves. The upper staff is in treble clef and the lower staff is in bass clef. Both are in a key signature of two flats. The upper staff contains chords and moving lines. The lower staff contains chords and moving lines.

Leadership

55

Musical staff for bass clef, measures 55-58. The melody consists of eighth and sixteenth notes, with a final phrase of eighth notes beamed together.

osed to say; My Mum and my Dad were so ver-y ver-y proud when I stood in the me-et-ing and

55

Musical staff for treble and bass clefs, measures 55-58. Both staves contain whole rests, indicating a vocal solo or a specific accompaniment style.

55

Piano accompaniment for measures 55-58. The right hand features chords with eighth notes, and the left hand features a steady eighth-note bass line.

59

Musical staff for bass clef, measures 59-62. The melody includes a rest in measure 60 and a phrase of eighth notes in measure 61.

prayed a-loud; I spoke my script so con - vine-ing lee that

59

Musical staff for treble and bass clefs, measures 59-62. The right hand has chords with eighth notes, and the left hand has chords with eighth notes.

He stood in the me-et-ing and prayed a-loud.

59

Piano accompaniment for measures 59-62. The right hand features chords with eighth notes and a melodic line, while the left hand features chords with eighth notes.

64

now I am the Lead-er of the whole E B.

64

64

He spoke his script so con - vinc-ing - lee that

64

64

68

At the age of fif-teen I be -

68

68

now he is the Lead-er of the whole E B.

68

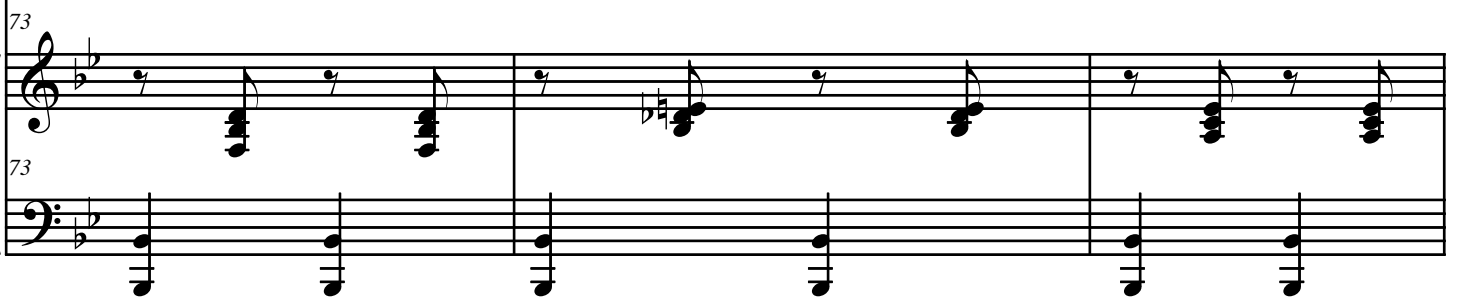
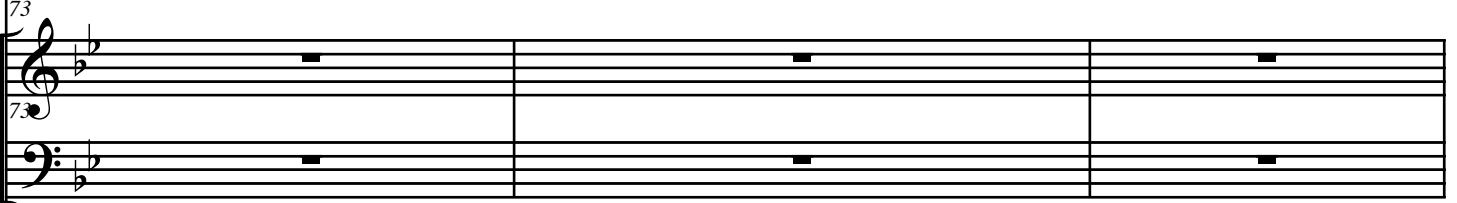
68

Leadership

73



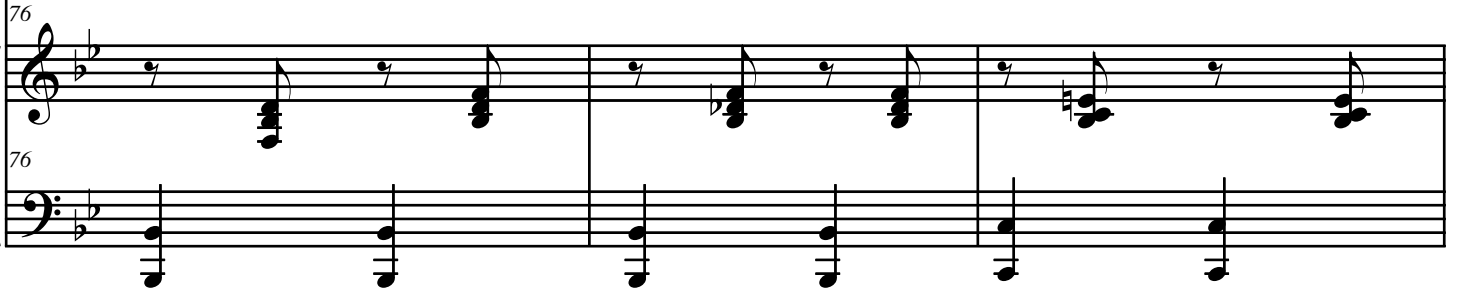
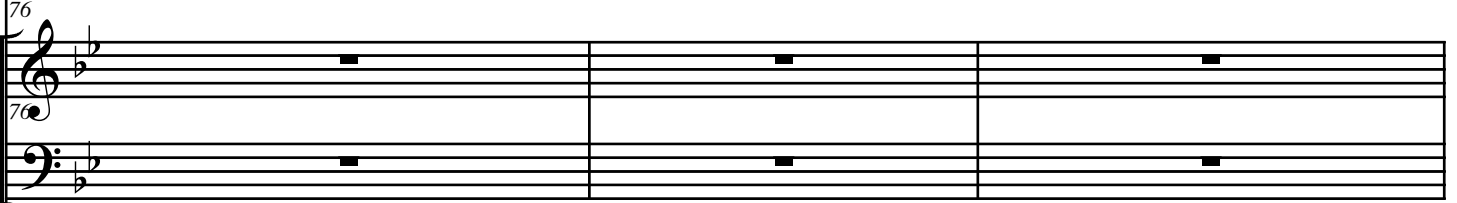
gan to preach, though un - der - stand - ing doc - trine was be - yond my reach; I



76



could-n't write a preach - ing that sound-ed an - y good, so I re - layed the preach-ings of the



79

79

folks who could; I re-layed their preach-ings so

79

79

79

79

He re-layed the preach-ings of the folks who could.

79

79

79

79

83

83

faith-ful - lee that now I am the Lead-er of the whole E B.

83

83

83

83

He re-layed their preach-ings so

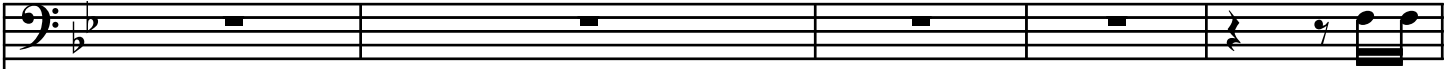
83

83


83

83

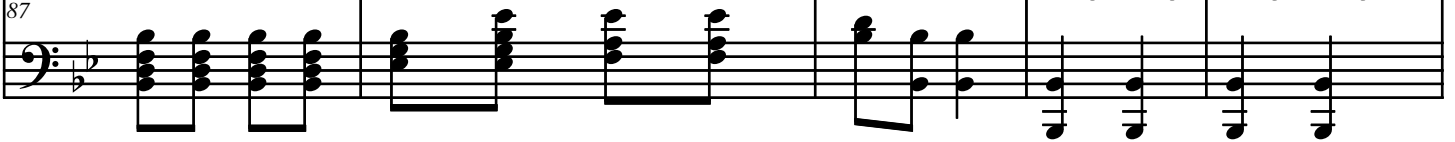
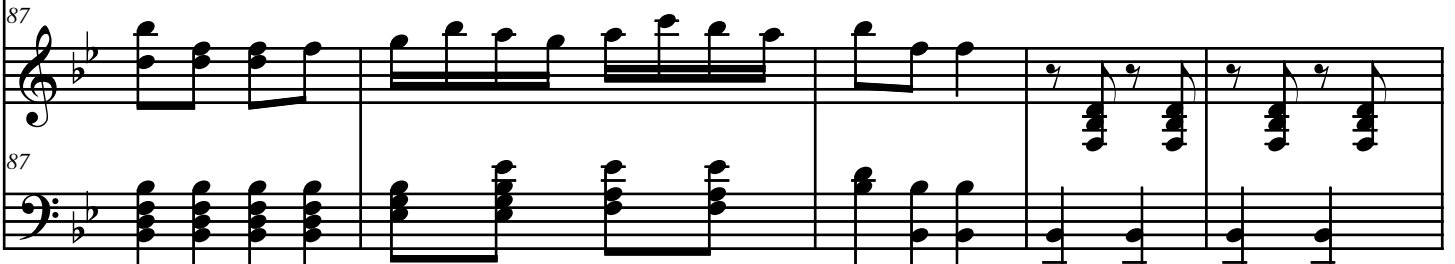
87



At the



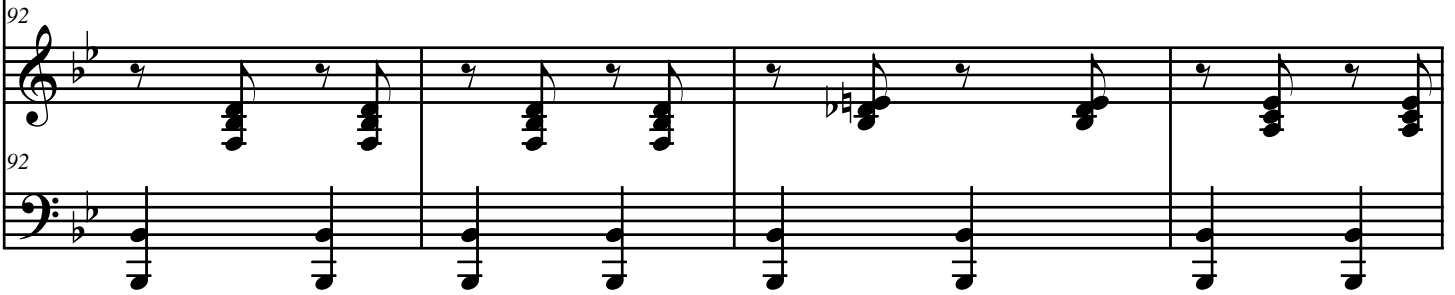
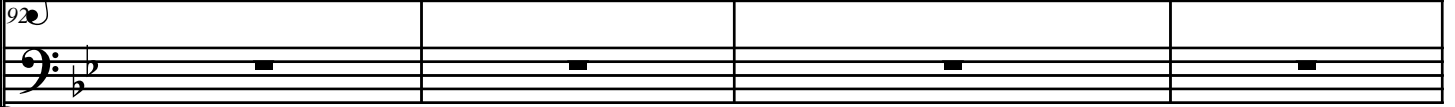
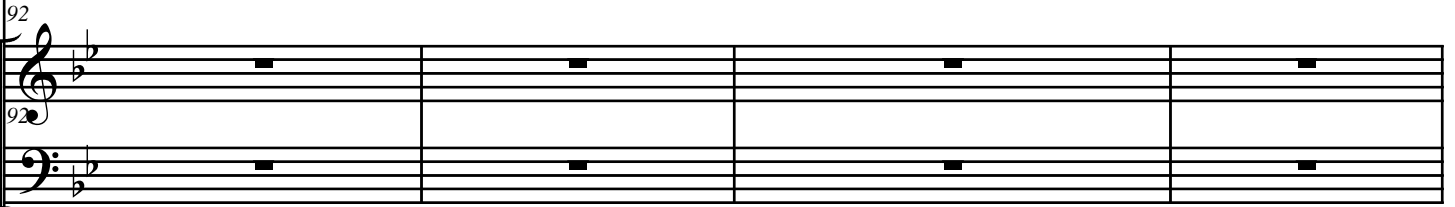
faith-ful - lee that now he is the Lead-er of the whole E B.



92



age of twenty five I de - clared my be-lief in the chap ab-out to make him-self our Big White Chief; I

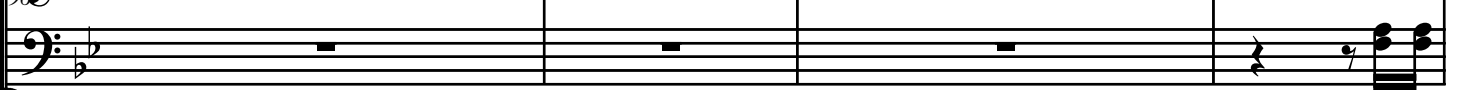
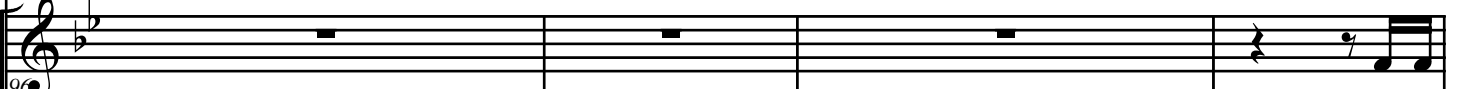


96



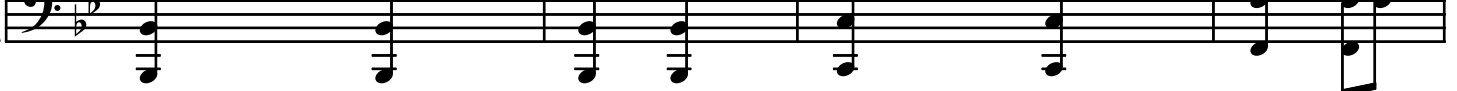
gave him such supp-ort that he re - ward-ed me and de - clared me his suc-cess-or as the Chief E B.

96

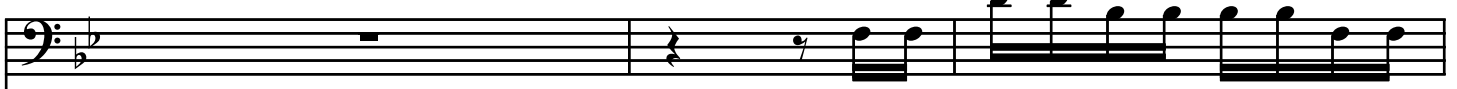


He de-

96



100



So they made me an Ap - ost - le, a suc -

100



clared him his suc - cess - or as the Chief E B.

100



103

cess - or of Paul, when he died of an ov-er-dose of al-co-hol.

103

We made him an Ap-ost-le, a suc-

103

cess - or of Paul when he di-ed of an ov - er dose of al-co-hol.

107

I

107

cess - or of Paul when he di-ed of an ov - er dose of al-co-hol.

107

cess - or of Paul when he di-ed of an ov - er dose of al-co-hol.

112

A single bass clef musical staff containing the melody for measure 112. The notes are: G2, A2, B2, C3, D3, E3, F3, G3, A3, B3, C4, D4, E4, F4, G4, A4, B4, C5.

don't know much re-lig - ion or e-ven right and wrong, so I just make up the doc-trine as I

Two sets of empty musical staves. The top set consists of a treble clef staff and a bass clef staff, both empty. The bottom set also consists of a treble clef staff and a bass clef staff, both empty.

112

Piano accompaniment for measure 112. The right hand (treble clef) has a series of chords: G2-A2, B2-C3, D3-E3, F3-G3, A3-B3, C4-D4, E4-F4, G4-A4, B4-C5. The left hand (bass clef) has a series of chords: G2-A2, B2-C3, D3-E3, F3-G3, A3-B3, C4-D4, E4-F4, G4-A4, B4-C5.

115

A single bass clef musical staff containing the melody for measure 115. The notes are: G2, A2, B2, C3, D3, E3, F3, G3, A3, B3, C4, D4, E4, F4, G4, A4, B4, C5.

go a-long; they all lap it up and trea-sure ev-ery word and print it all ver-bat-im though it

Two sets of empty musical staves. The top set consists of a treble clef staff and a bass clef staff, both empty. The bottom set also consists of a treble clef staff and a bass clef staff, both empty.

115

Piano accompaniment for measure 115. The right hand (treble clef) has a series of chords: G2-A2, B2-C3, D3-E3, F3-G3, A3-B3, C4-D4, E4-F4, G4-A4, B4-C5. The left hand (bass clef) has a series of chords: G2-A2, B2-C3, D3-E3, F3-G3, A3-B3, C4-D4, E4-F4, G4-A4, B4-C5.

119

Musical staff for bass clef, measures 119-122. The melody starts with a quarter note G2, followed by quarter notes F2, E2, and D2. There is a whole rest in measure 120. Measure 121 has a quarter rest followed by a quarter note D2. Measure 122 has a quarter note D2, followed by eighth notes C2, B1, A1, G1, F1, E1, D1, and C1.

sounds ab-surd; They send me lots of cash in a

119

Musical staff for treble and bass clefs, measures 119-122. The treble clef staff has a quarter rest in measure 119, followed by quarter notes G4, A4, B4, and C5. The bass clef staff has a quarter rest in measure 119, followed by quarter notes G2, F2, E2, and D2. Measures 120-122 contain chords: G2-A2-B2-C3, F2-G2-A2-B2, and E2-F2-G2-A2.

We print it all ver-bat-im, though it sounds ab-surd

119

Musical staff for piano, measures 119-122. The right hand (treble clef) has a quarter rest in measure 119, followed by quarter notes G4, A4, B4, and C5. The left hand (bass clef) has a quarter rest in measure 119, followed by quarter notes G2, F2, E2, and D2. Measures 120-122 contain chords: G2-A2-B2-C3, F2-G2-A2-B2, and E2-F2-G2-A2.

123

Musical staff for bass clef, measures 123-126. The melody starts with a quarter note G2, followed by quarter notes F2, E2, and D2. Measures 124-126 contain eighth notes: G2-A2-B2-C3, F2-G2-A2-B2, and E2-F2-G2-A2.

great big wad, now I am the Un-iv-ers-al Man of God.

123

Musical staff for treble and bass clefs, measures 123-126. The treble clef staff has a quarter rest in measure 123, followed by quarter notes G4, A4, B4, and C5. The bass clef staff has a quarter rest in measure 123, followed by quarter notes G2, F2, E2, and D2. Measures 124-126 contain chords: G2-A2-B2-C3, F2-G2-A2-B2, and E2-F2-G2-A2.

We send him lots of cash in a

123

Musical staff for piano, measures 123-126. The right hand (treble clef) has a quarter rest in measure 123, followed by quarter notes G4, A4, B4, and C5. The left hand (bass clef) has a quarter rest in measure 123, followed by quarter notes G2, F2, E2, and D2. Measures 124-126 contain chords: G2-A2-B2-C3, F2-G2-A2-B2, and E2-F2-G2-A2.

127

A single bass staff containing a whole rest followed by a quarter rest, then a quarter note G2, an eighth note A2, and a quarter note B2.

So Breth-ren all, who-

Two staves of music. The upper staff is in treble clef and contains a melodic line starting with a quarter note G4, followed by eighth notes A4, B4, C5, D5, E5, F5, G5, and a quarter rest. The lower staff is in bass clef and contains a bass line with chords and moving lines.

great big wad, Now he is the Un-iv-er-sal Man of God.

Two staves of music. The upper staff is in treble clef and contains a piano accompaniment with chords and moving lines. The lower staff is in bass clef and contains a bass line with chords and moving lines.

133

A single bass staff containing a quarter note G2, an eighth note A2, a quarter note B2, an eighth note C3, a quarter note D3, an eighth note E3, a quarter note F3, an eighth note G3, a quarter note A3, an eighth note B3, a quarter note C4, an eighth note D4, a quarter note E4, an eighth note F4, a quarter note G4, an eighth note A4, a quarter note B4, an eighth note C5, a quarter note D5, an eighth note E5, a quarter note F5, an eighth note G5, a quarter note A5, an eighth note B5, a quarter note C6, an eighth note B5, a quarter note A5, an eighth note G5, a quarter note F5, an eighth note E5, a quarter note D5, an eighth note C5, a quarter note B4, an eighth note A4, a quarter note G4, an eighth note F4, a quarter note E4, an eighth note D4, a quarter note C4, an eighth note B3, a quarter note A3, an eighth note G3, a quarter note F3, an eighth note E3, a quarter note D3, an eighth note C3, a quarter note B2, an eighth note A2, a quarter note G2.

ev-er you may be, if you want to cli- mb to the top of the tree, Wheth-er you're a saint or a

Two staves of music. The upper staff is in treble clef and contains a piano accompaniment with chords and moving lines. The lower staff is in bass clef and contains a bass line with chords and moving lines.

133

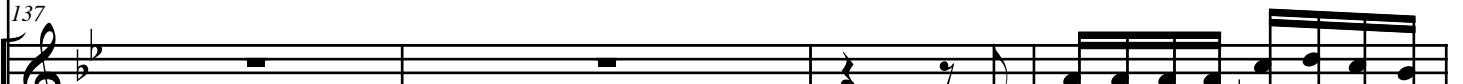
Two staves of music. The upper staff is in treble clef and contains a piano accompaniment with chords and moving lines. The lower staff is in bass clef and contains a bass line with chords and moving lines.

137

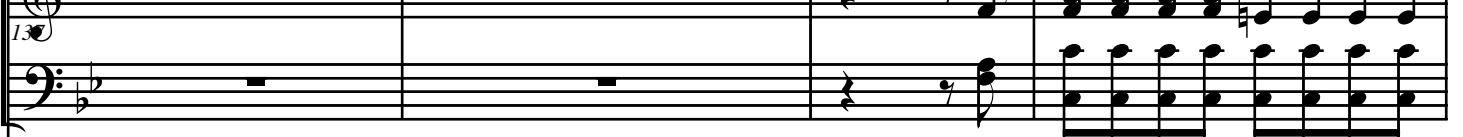


ras-cal or a fool, be care-ful to be guid-ed by this gold-en rule:

137




137

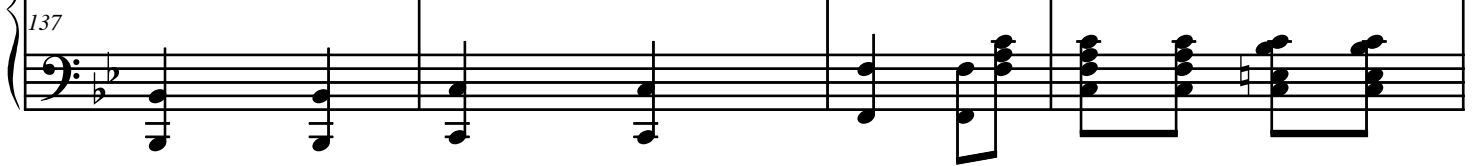


Be care-ful to be guid-ed by this

137



137

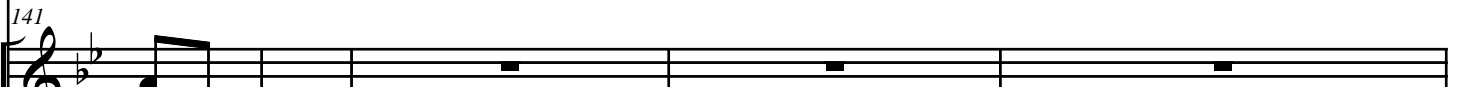


141

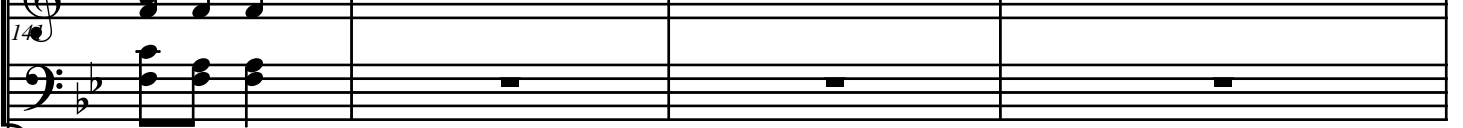


Supp - ort your lead - er, what - ev - er your be - lief, and some hap - py day you'll be the

141



141



gold - en rule:

141



141



145

A single bass staff containing four measures of music. The first measure has a whole note G2, followed by three measures of whole rests.

Great Big Chief!

Two staves: a vocal line in treble clef and a piano accompaniment line in bass clef. The vocal line starts at measure 145 with a quarter rest, followed by a quarter note G4, and then eighth-note patterns. The piano accompaniment features chords and moving lines in both hands.

Supp - ort your Lead - er, what - ev - er your be - lief and some - hap - py day you'll be the

Two staves: a treble clef staff and a bass clef staff. The treble staff contains chords and moving lines, while the bass staff contains a steady accompaniment pattern.

149

A single bass staff containing four measures of music, all of which are whole rests.

Two staves: a vocal line in treble clef and a piano accompaniment line in bass clef. The vocal line starts at measure 149 with a quarter note G4, followed by a quarter rest, and then a quarter note G4. The piano accompaniment features chords and moving lines in both hands.

Great Big Chief!

Two staves: a treble clef staff and a bass clef staff. The treble staff contains chords and moving lines, while the bass staff contains a steady accompaniment pattern.